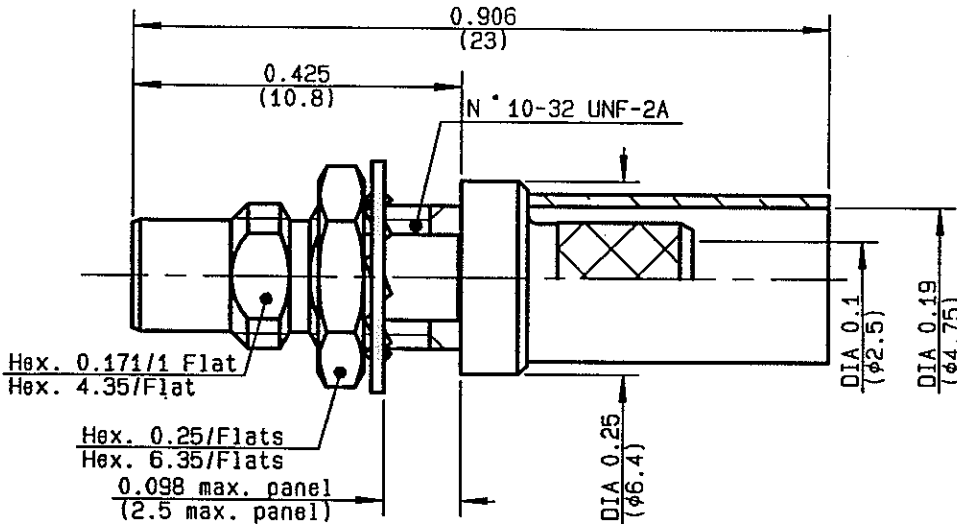
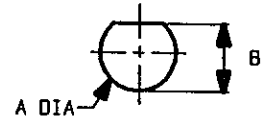


**STRAIGHT BULKHEAD JACK CRIMP TYPE
CABLE 3.6/75 SINGLE BRAID**

R12.307.200
SERIES SMC



PERCEGE PANNEAU
MOUNTING HOLE



	MM		INCH	
	maxi	mini	maxi	mini
A	5.05	4.95	0.199	0.196
B	2.08	2.01	0.082	0.079

NOMINAL IMPEDANCE	50 Ω
FREQUENCY RANGE	0-2 GHz
TEMPERATURE RATING	-65/+165 °C
V.S.W.R	1.50 + x F(GHz)Maxi
RF INSERTION LOSS	TBD √F(GHz) dB Maxi
VOLTAGE RATING	335 Veff Maxi
DIELECTRIC WITHSTANDING VOLTAGE	1000 Veff Mini
INSULATION RESISTANCE	1000 MΩMini
HERMETIC SEAL	NA Atm.cm ³ /s
PACKAGE (pressurized only)	NA
MECHANICAL DURABILITY	Cycles
WEIGHT	2.1 gr
SPECIFICATION	

CABLES : **CW 1381**

OTHERS CHARACTERISTICS

CABLE RETENTION	134 N Mini
CENTER CONTACT RETENTION	
Axial force - mating end	10 N Mini
Axial force - opposite end	10 N Mini
Torque	NA cm.N Mini
RECOMMENDED TORQUES	
Mating	NA cm.N
Panel nut	60 cm.N
Clamp nut	NA cm.N

CONNECTOR PARTS	MATERIALS	FINISH	(all values are given in micrometers)
BODY	BRASS	GOLD 0.2 OVER NICKEL 2	
OUTER CONTACT			
CENTER CONTACT	BRASS	GOLD 1.3 OVER NICKEL 2	
INSULATOR	PTFE	-	
GASKET		-	
OTHERS PIECES			

ISSUE 9741A00	CREATION DATE 26-MAR-97	FILE PART-NUMBER 96-0106-253
-------------------------	-----------------------------------	--



The information given here is subject to change without notice. Design changes may be in order to improve the product.

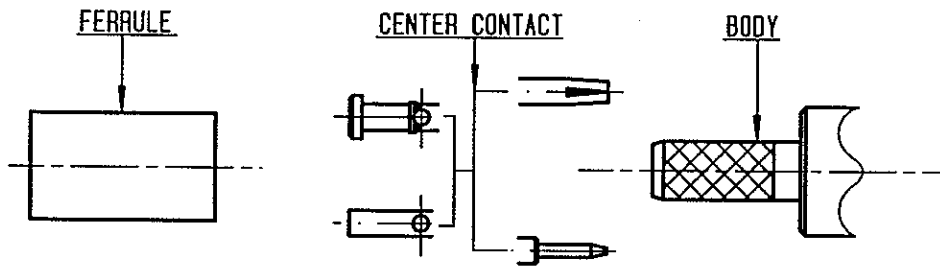
Connect to the future



R112.307.200

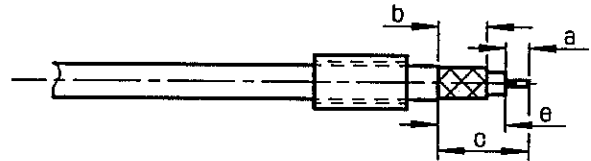
ISSUE 9741A00

SERIES SMC



①

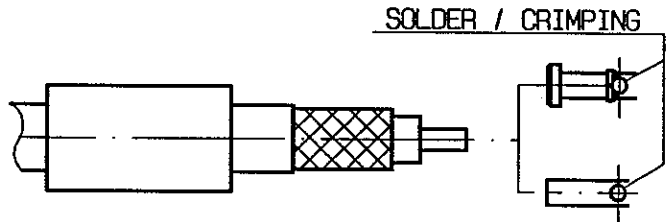
Slide ferrule onto cable
Strip the cable .



Stripping	a	b	c	d	e
inch	0.098	0.217	0.433	0	0.335
mm	2.5	5.5	11		8.5

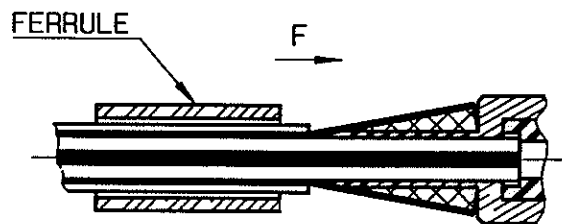
②

Slide center contact on until it bottoms against cable dielectric .
Solder or crimp center contact .
Crimping tool : R282 281 000 position 3 + positioner R282 983 000 (cable 2.6/50)



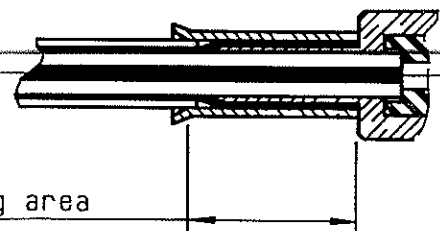
SOLDER / CRIMPING

Fan the braid .
Slide cable into the body until bottoms against insulator .
Slide ferrule over the braid .
(In direction F)



④

Crimp the ferrule with crimping tool R 282 287 000 (Q92316) +
+ dies R282 265 002 (Q92435) (Hex. 4.52)
Cut excess of braid if necessary .



Crimping area